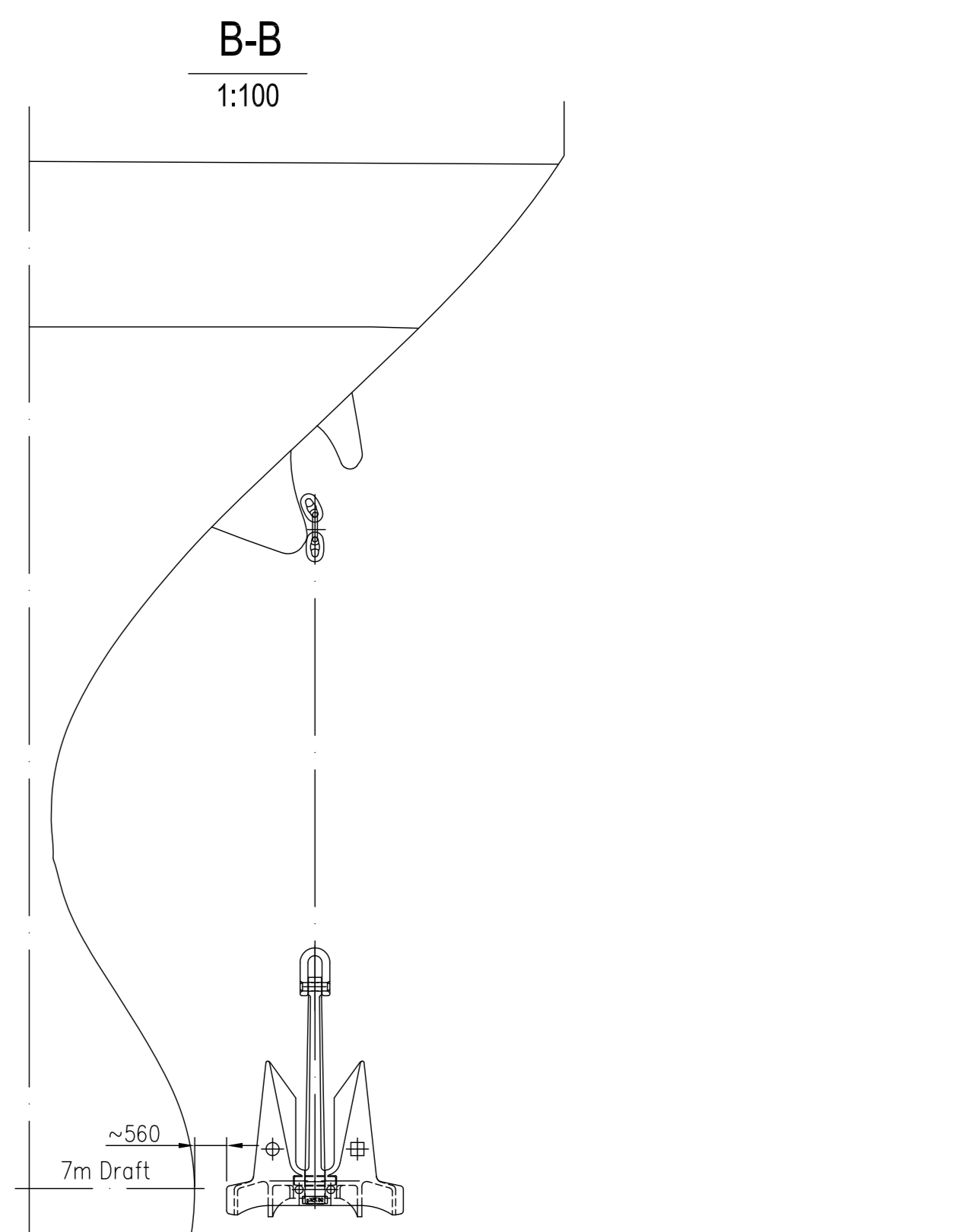
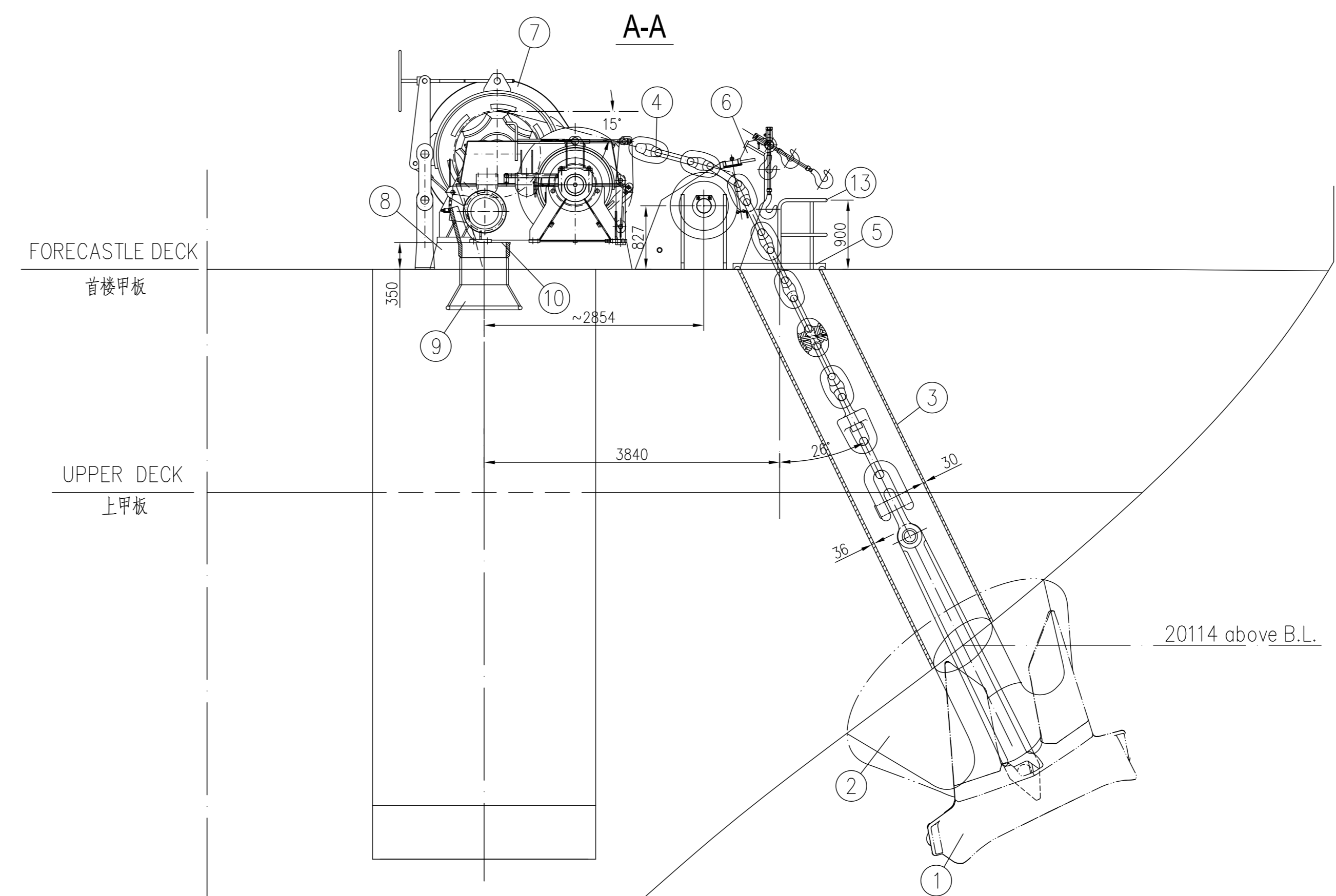
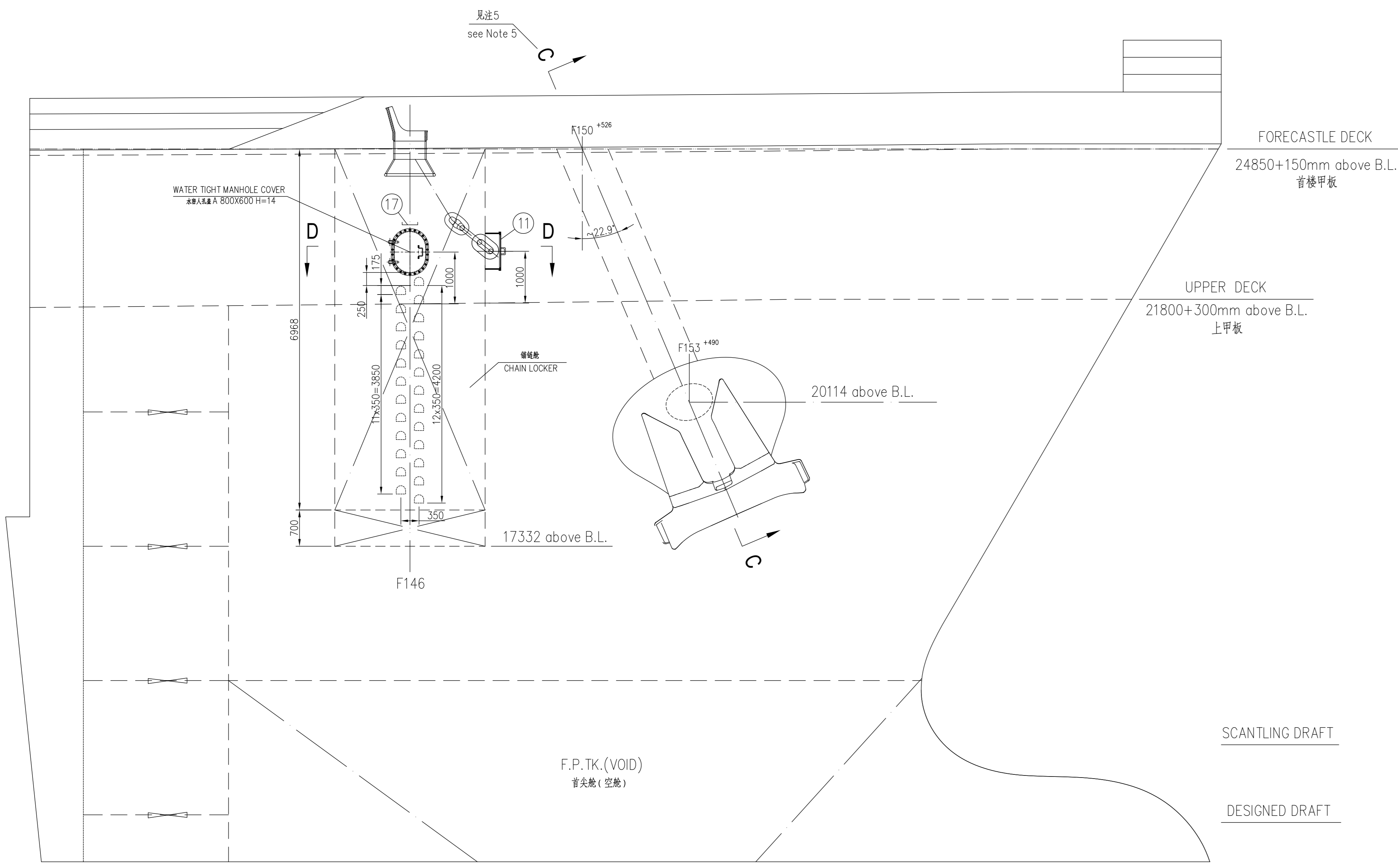
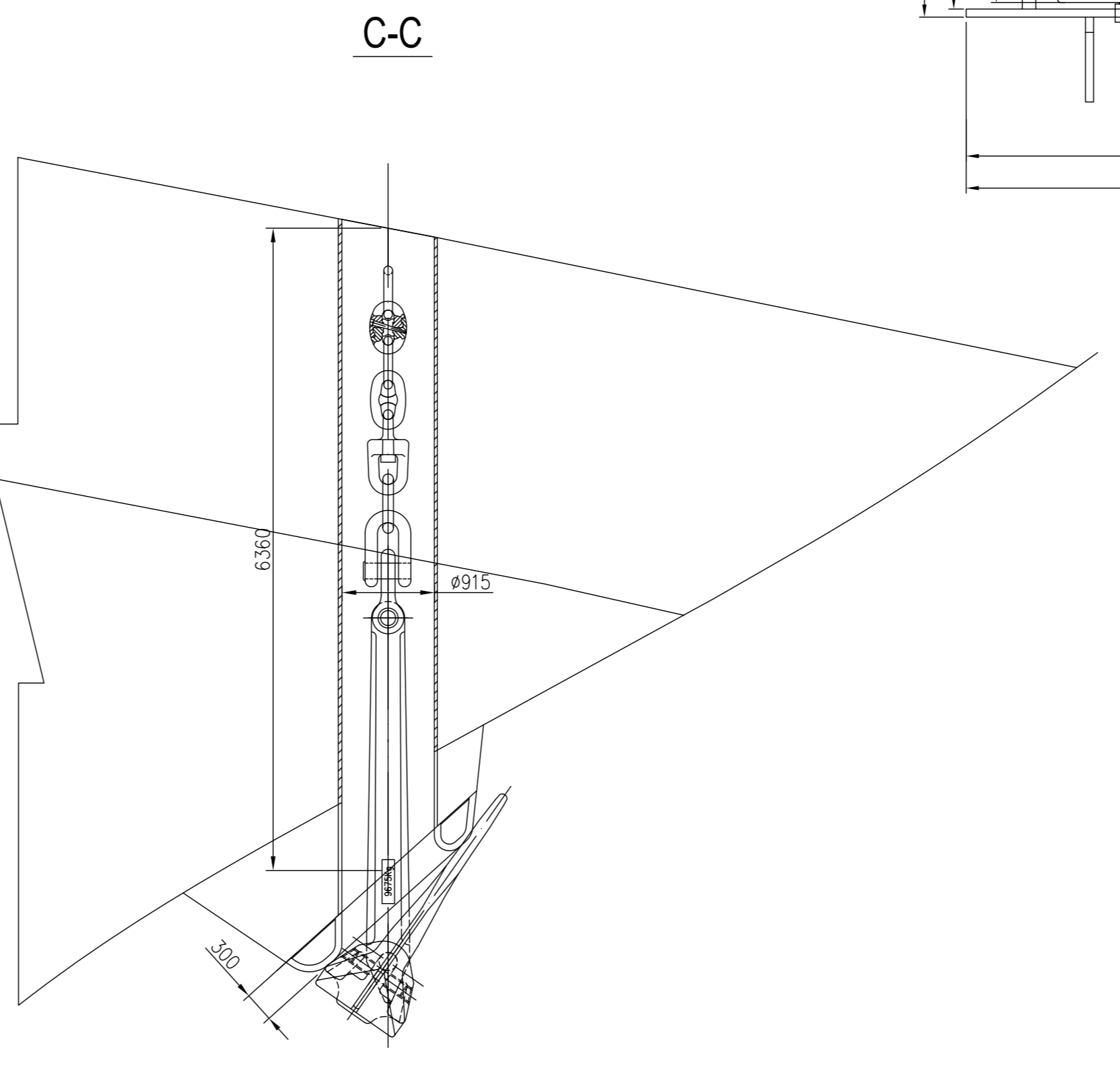
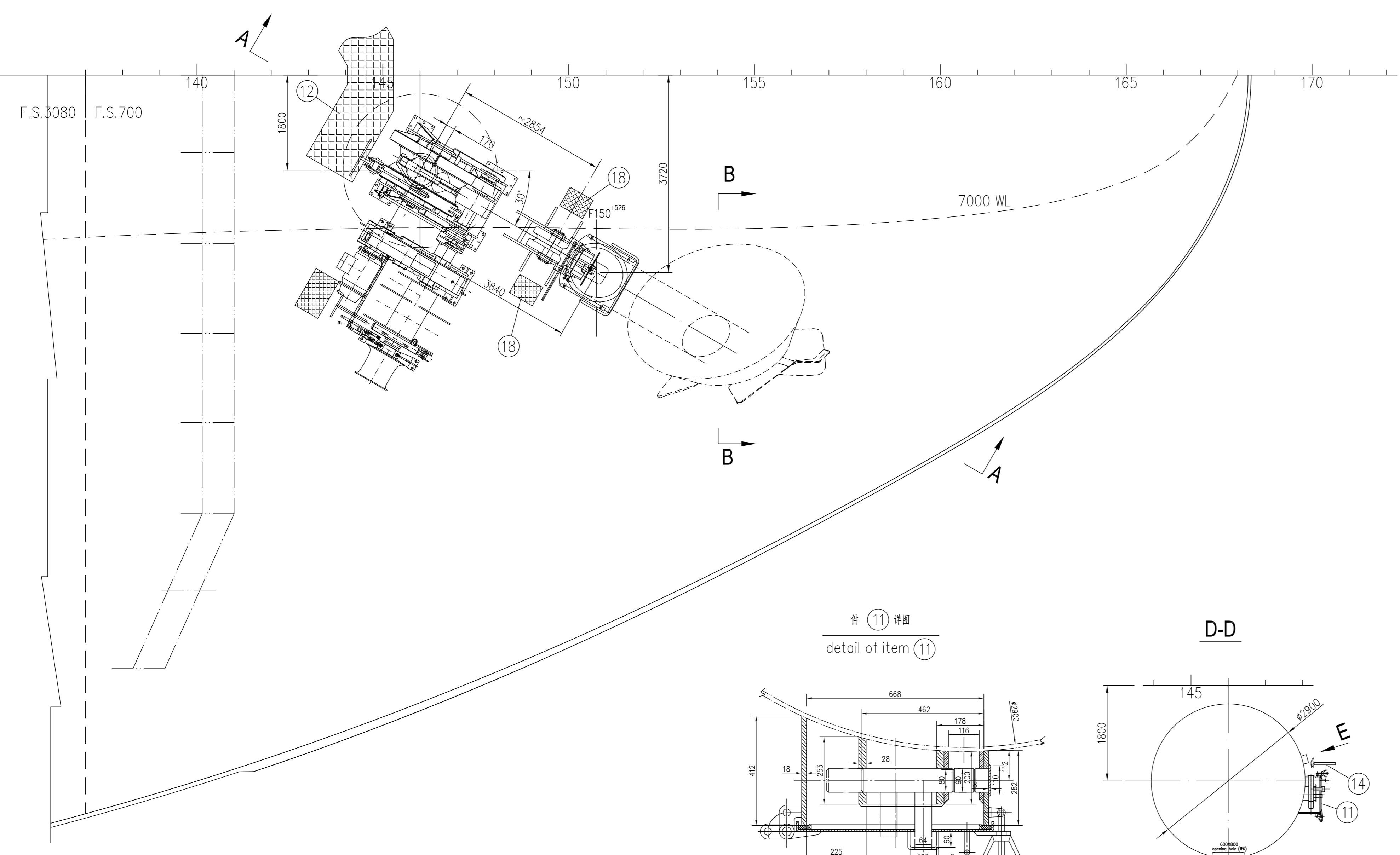


日期 DATE	标记 MARKER NUMBER	修改内容 MODIFICATION NO./DESCRIPTION	页次 PAGE	设计 DESIGNED	审核 CHECKED

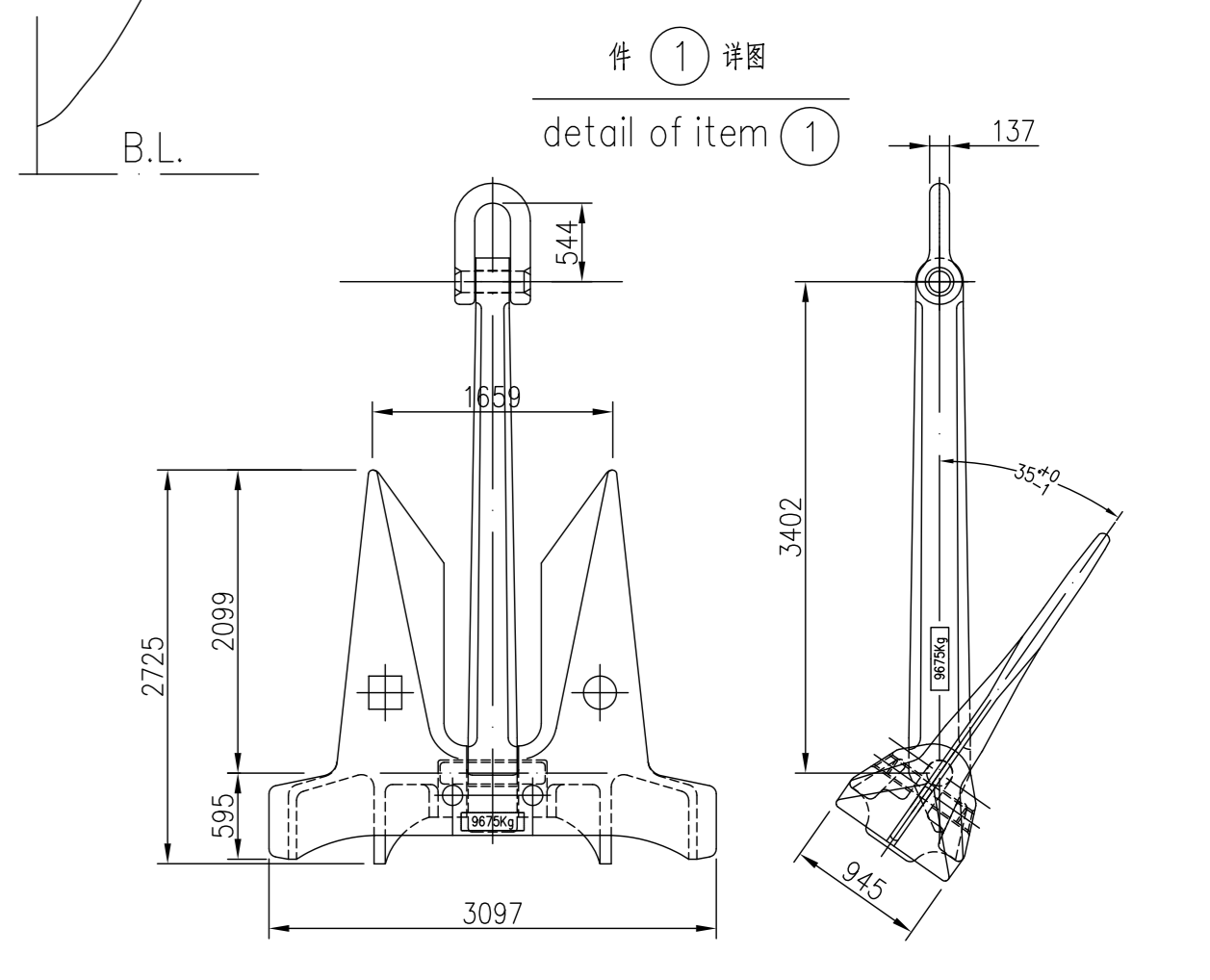


F.S.3080 F.S.700 140 145 150 155 160 165 170

F.S.3080 F.S.700 140 145 150 155 160 165 170



- NOTES:
1. THE MODEL TEST OF SCALE 1:4 FOR ANCHORING TO BE CARRIED OUT FOR THE FIRST SHIP. THE CONSTRUCTION ARE TAKEN AFTER APPROVAL BY OWNER AT SITE.
 2. IN THIS DRAWING THE POSITION AND SEATING HEIGHT OF ROLLER CHAIN STOPPER FOR HAWSE PIPE IS FOR REFERENCE ONLY. ACCURATE POSITION SHOULD BE DETERMINED BY THE METHOD OF PULL-LINE AT THE WORKSITE. THE KENTER LINK SHOULD BE ARRANGED ON THE BACKWARD END OF THE ROLLER CHAIN STOPPER.
 3. THE ANCHOR HANDLING EQUIPMENTS IN THE SHIP SHOULD BE ARRANGED SYMMETRICALLY. STARBOARD ONLY IS SHOWN IN THE DRAWING, PORT IS SYMMETRICAL WITH STARBOARD. THE NUMBERS SHOWN IN MATERIAL TABLE FOR THE TOTAL NUMBERS FOR THE SHIP.
 4. THE DECK UNDER THE WINDLASS SEAT AND CHAIN STOPPER SHOULD BE STRENGTHENED, AND THE TYPE REFERS TO THE STRUCTURE DRAWING OF THE SHIP.
 5. C-C SECTION IS THROUGH CENTER LINE OF HAWSE PIPE AND HULL NORMAL LINE AT INTERSECTION POINT OF HAWSE PIPE CENTER LINE AND HULL.
 6. ALL THE PARTS ARE PURCHASED.
- 注:
1. 首制船体发料时应制备 1:4 未模进行拉锚试验, 待船体非强认可后才能施工。
 2. 图中滚链解链器的安装位置和高度仅供参考, 准确位置视船况。
 3. 首制船体发料时应制备 1:4 未模进行拉锚试验, 待船体非强认可后才能施工。
 4. 船机底座、解链器甲板应加厚, 加厚形式详见船体结构图。
 5. C-C 剖面是在解链器中心线与外舷交点及的外舷法线和解链器中心线构成的剖面。
 6. 所有零件外购。



ITEM NO.	MARK	名称及规格	数量	牌号	材料	重量	SIN	TOT	REMARKS
18		解链器操作台 WORKING PLATFORM OF CHAIN STOPPER	4		组合件 ASSEMBLY				
17		扶手 $\phi 42.5 \times 3.25$ HAND RAIL $\phi 42.5 \times 3.25$	2	GL-A					
16		扁钢 -2x30 FLAT BAR -2x30	2	GL-A					
15		扁钢 -6x30 FLAT BAR -6x30	4	GL-A					
14		锤子(8磅) HAMMER(8 POUND)	2	组合件 ASSEMBLY	3.6	7.2			
13		栏杆 DN32 RAIL	6.6	GL-A					
12		起锚机操作台 WORKING PLATFORM OF WINDLASS	1	组合件 ASSEMBLY					
11	64CB/T3143-1999	插行牙锚器 DOG TYPE CABLE CLENCHESES	2	组合件 ASSEMBLY					
10		解链器罩 CHAIN PIPE COVER	2	A 级钢 GRADE A					
9		解链器 CHAIN PIPE	2	A 级钢 GRADE A					
8		解链器座 SEAT OF WINDLASS	2	A 级钢 GRADE A					
7		解链器 WINDLASS	2	组合件 ASSEMBLY					
6		液控风刀解链器 $\phi 87$ CHAIN STOPPER	2	组合件 ASSEMBLY					
5		解链器罩 HAWSE PIPE COVER	2	组合件 ASSEMBLY					
4		解链器 $\phi 87$ ANCHOR CHAIN	715	GRADE K3 CHAIN STEEL					
3		解链器 $\phi 915$ HAWSE PIPE	2	A 级钢 GRADE A					
2		锚台及锚嘴 ANCHOR BED AND BELL MOUTH	2	组合件 ASSEMBLY					
1		大吨力锚 9675kg HHP ANCHOR	2	铸钢 CAST STEEL	9675	19350			

JNSD Shanghai China
Tel: +86-021-53025656
Fax: +86-021-63012664
E-mail: jnsd@jnsdgroup.com.cn

5,100 箱架装箱船
5,100TEU CONTAINER VESSEL

设计阶段 DES STA
船名 HULL NO.
H2431

图号 DRAWING NO.
FO-02
72000200D

锚设备布置图
ANCHOR HANDLING
ARRANGEMENT

比例 SCALE
1:50

图幅 AREA
150

张数 SHEETS
第 1 张
共 1 张

日期 DATE
2024.02.02

设计人 DESIGNER
审核人 CHECKER
批准人 APPROVED