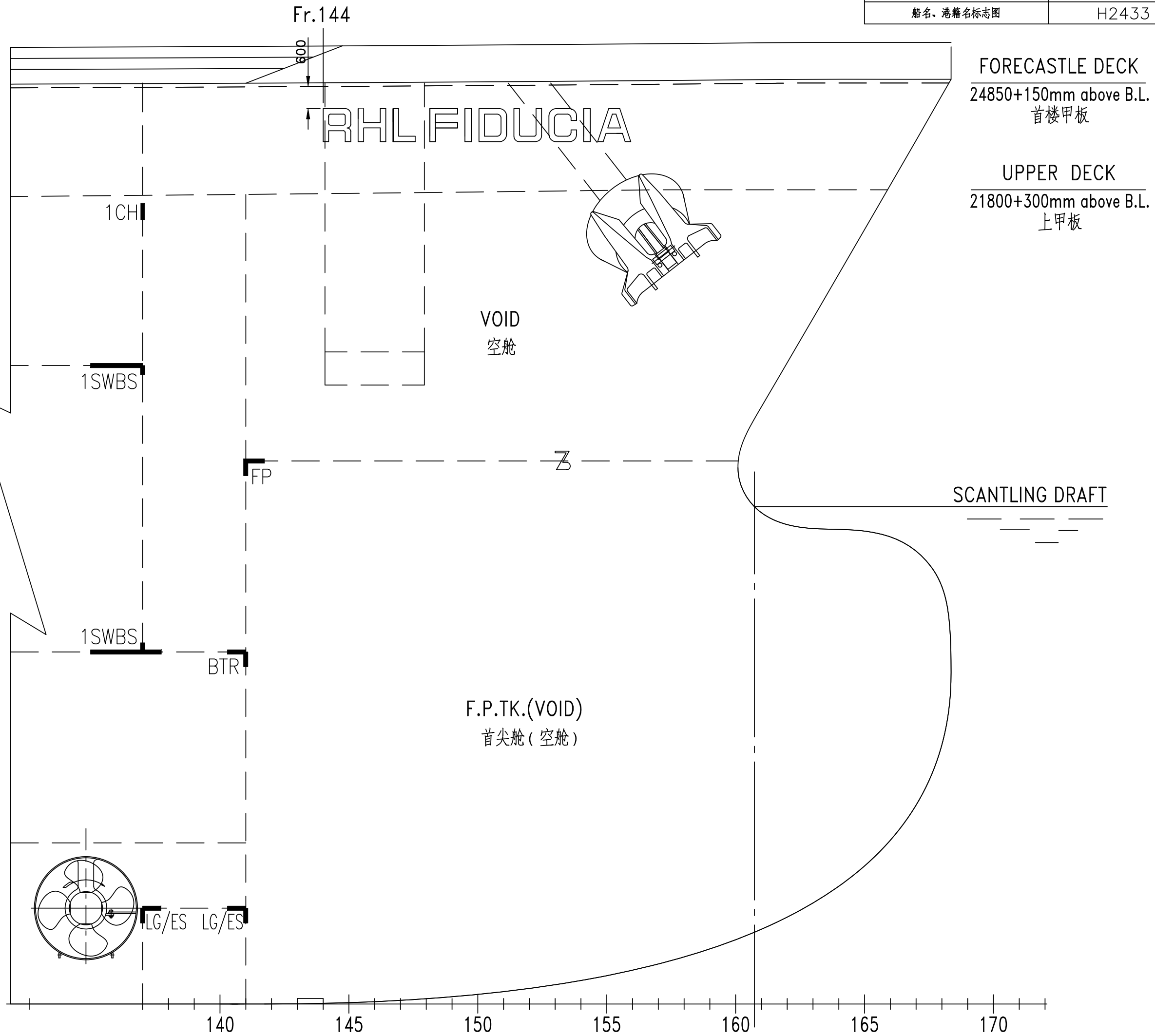


# 图 纸 履 历 PLAN HISTORY

日期 DATE	标 记 MARKER	数 量 NUMBER	版 本 REV.	修 改 单 号/说明 MODIFICATION NO./DESCRIPTION	页 码 PAGE	设 绘 DESIGNED	审 核 EXAMINE

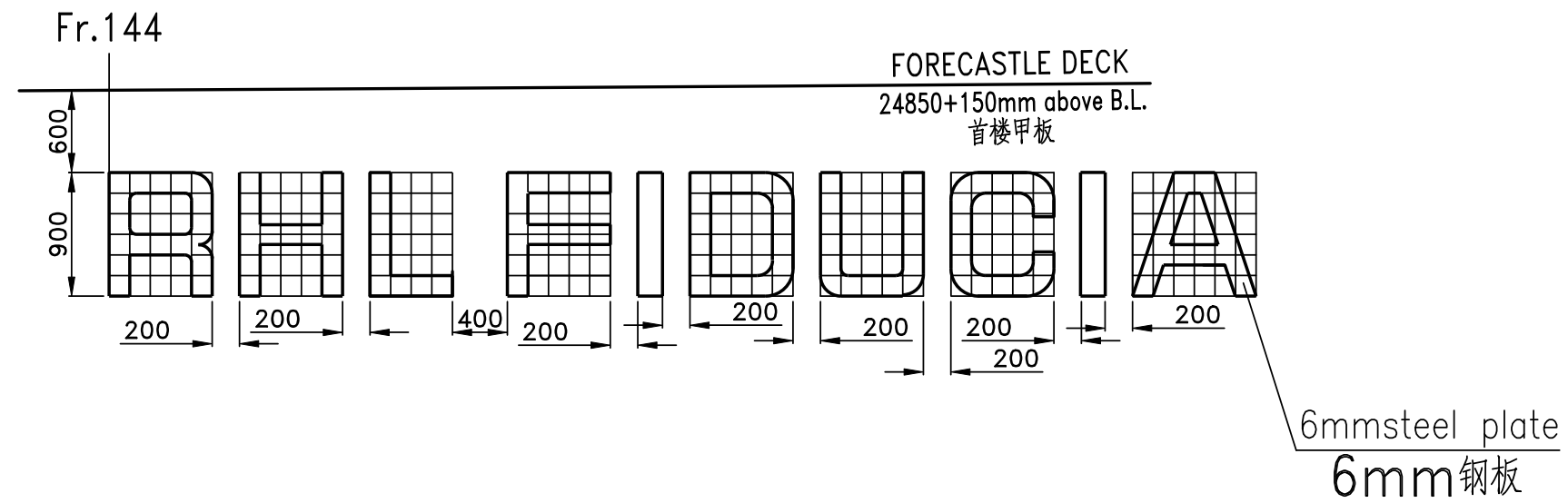
--	--	--	--	--	--	--	--

<b>JNSD</b> Shanghai China Tel: +86-021-53025656 Fax: +86-021-63012364 E-mail: jnsd@jnshipyard.com.cn			5,100TEU CONTAINER VESSEL 5,100 箱集装箱船		设计阶段 DES.STA.		完工设计 FINISHED DESIGN					
					工程号 HULL NO.		H2433					
文件号 FILE			版本 REV.		SHIP NAME & REGISTRY PORT MARK 船名、港籍名标志图		图号 DRAWING NO.		72002500D			
							重量(kg) WEIGHT		比例 SCALE		面积 AREA	
							1:100		0.685			
							共 6 页 TOTAL SHEETS		第 1 页 SHEET			
							上海江南长兴重工有限责任公司 SHANGHAI JIANGNAN CHANGXING HEAVY INDUSTRY CO., LTD.					
设 绘 DESIGNED			审 核 EXAMINE		校 对 CHECKED		会 签 COUNTERSIGN		标 检 STANDARDIZED			
校 对 CHECKED			复 审 REVIEWED		审 定 APPROVED		批 准 AGREED		4号 297x210=0.06m <sup>2</sup>			



### SHIP NAME DETAIL

船名详图  
1:50

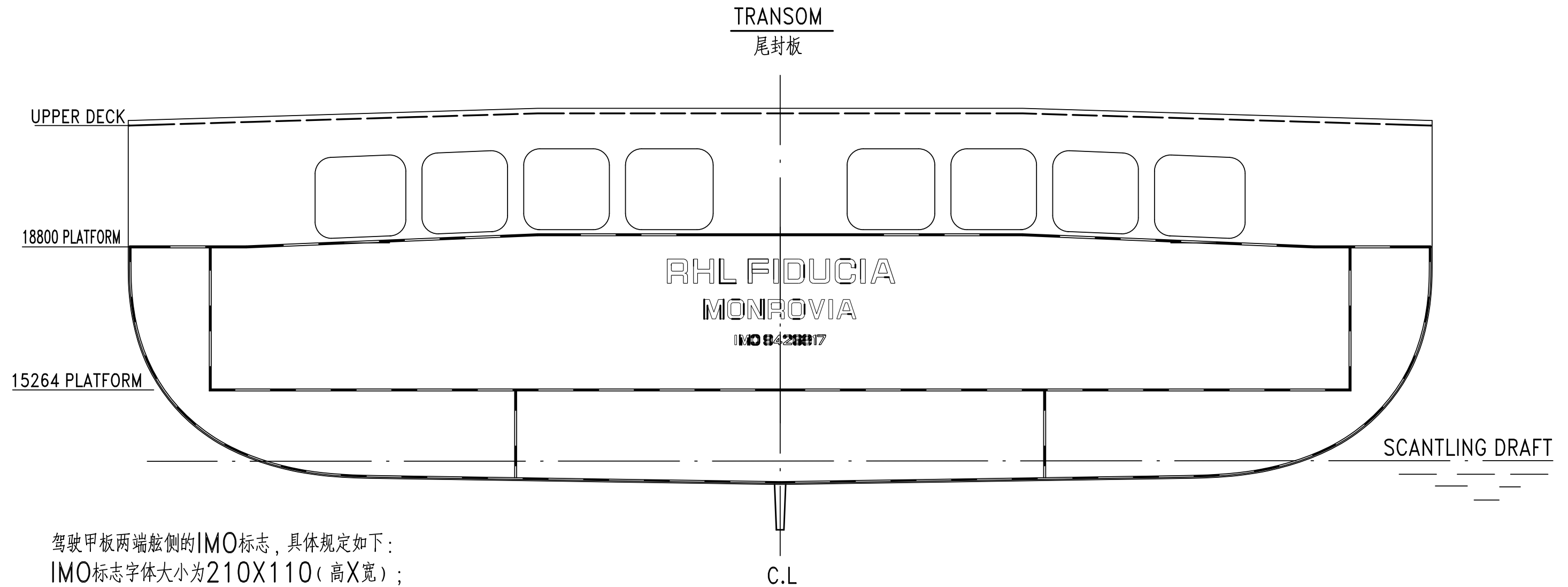


NOTES:

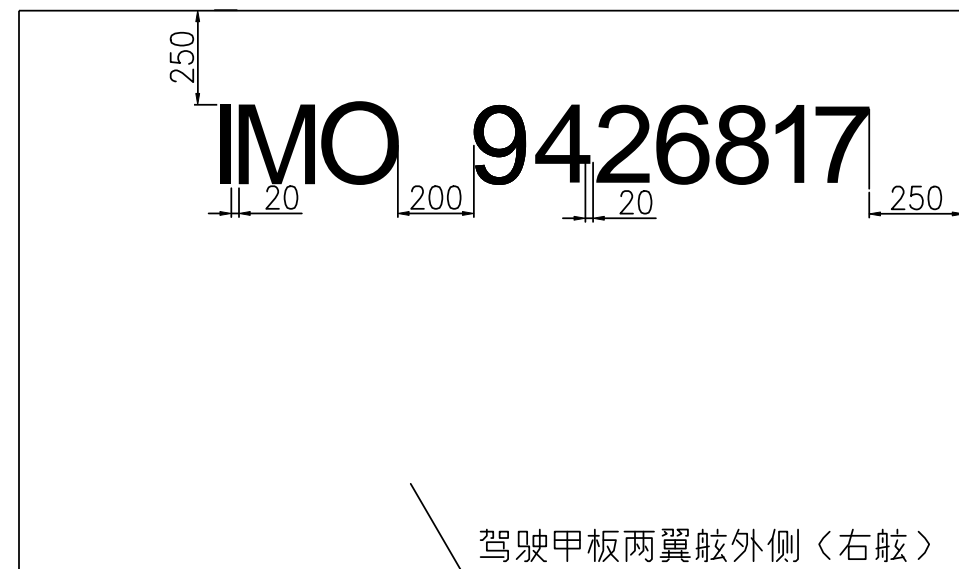
1. THE MARK SHOULD BE ARRANGED ON PORT & STARBOARD SYMMETRICALLY.
2. THE SHIP NAME TO BE MARKED BY 6mm STEEL PLATE AND BE PAINTED BLACK.

说明:

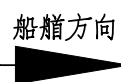
1. 本标志仅为右舷，左舷与之中心对称布置。
2. 本标志底板和字母皆为6mm钢板，底板涂白色漆字母涂黑色漆。



驾驶甲板两端舷侧的IMO标志，具体规定如下：  
 IMO标志字体大小为210X110（高X宽）；  
 IMO标志字体为Arial，材质为Q235-B，板厚为6mm；  
 IMO标志定位如下图所示（此标志中号码仅为H2433船）：



49                      50                      51                      52

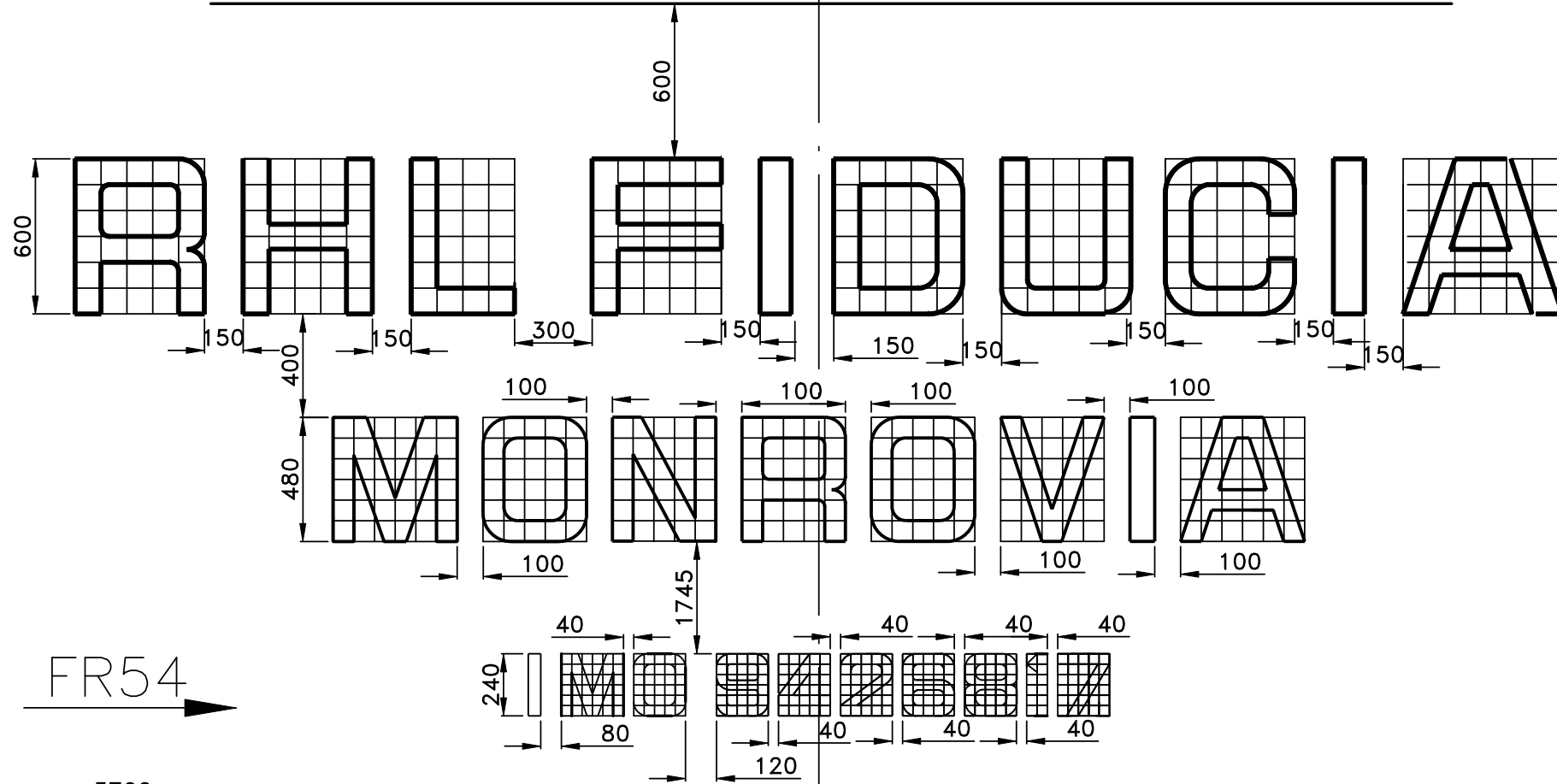


52                      51                      50                      49

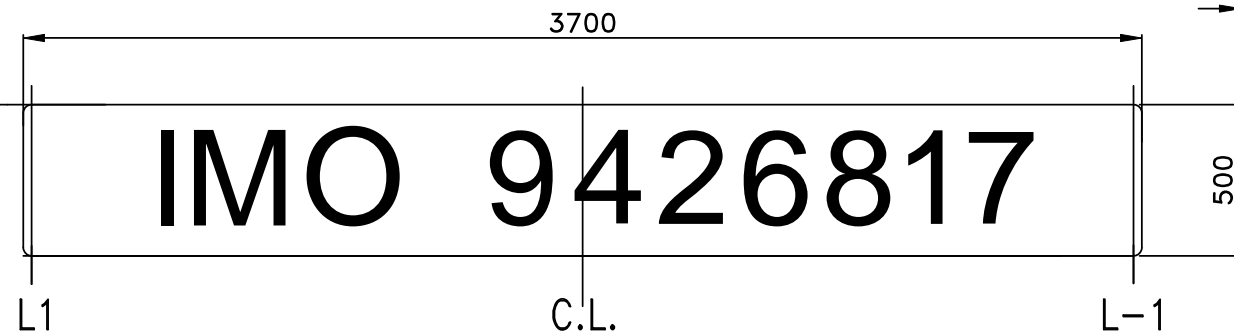
TRANSOM

尾封板  
1:25

19100 PLATFORM

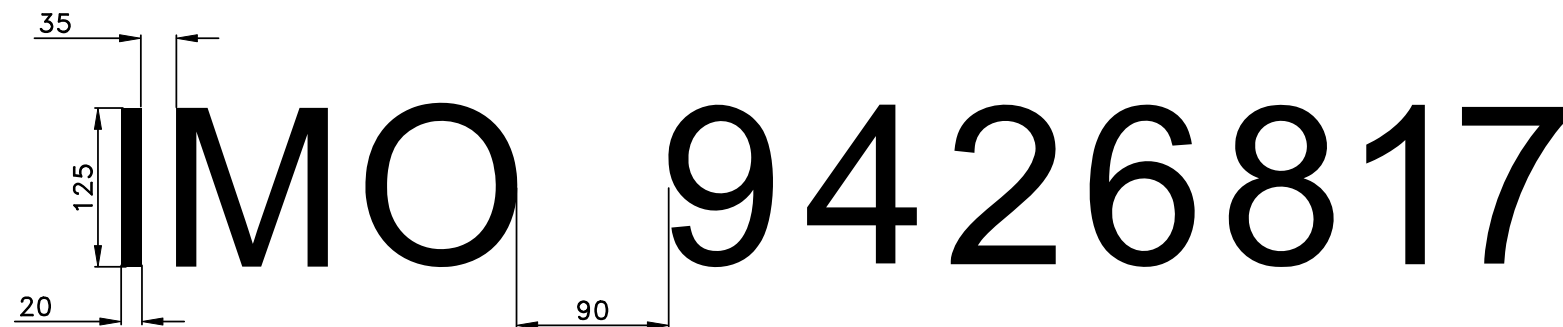


FR54



距机舱上平台2200mm

机舱标志字样尺寸 (H2433)

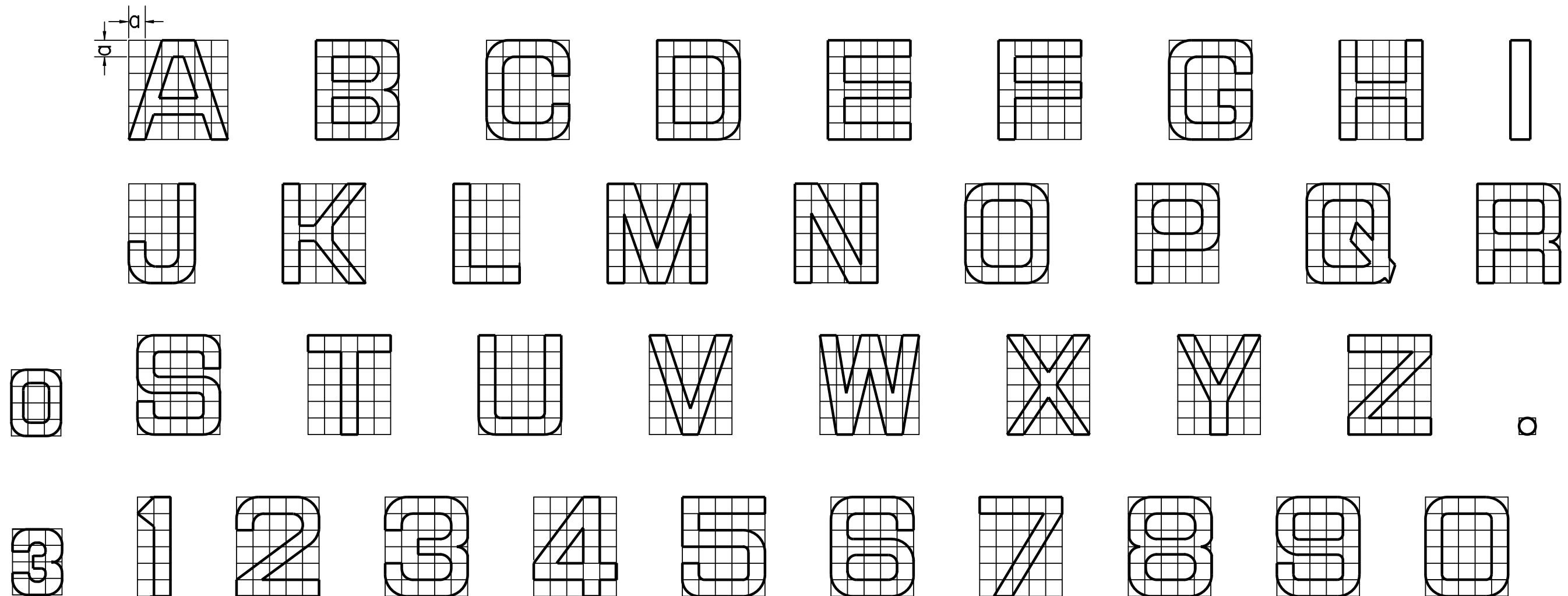


NOTES:

1. THE IMO NUMBER MARK IS FOR REFERENACE ONLY, WHICH WILL BE REVISED AS THE ACTUAL.
2. THE SHIP NAME TO BE MARKED BY 6mm STEEL PLATE AND BE PAINTED BLACK.

说明:

1. 本标志中IMO NUMBER仅为H2433, 其余需按实际的修改。
2. 本标志底板和字母皆为6mm钢板, 并涂黑色漆。



## NOTES:

1. THE UNIT SIZE OF SHIP NAME'S LETTER ON BOW IS  $a \times a = 150 \times 150$ .
2. THE UNIT SIZE OF SHIP NAME'S LETTER ON TRANSOM IS  $a \times a = 100 \times 100$ .
3. THE UNIT SIZE OF REGISTRY PORT NAME'S LETTER ON TRANSOM IS  $a \times a = 80 \times 80$ .
3. THE UNIT SIZE OF IMO NUMBER MARK'S LETTER ON TRANSOM IS  $a \times a = 40 \times 40$ .

## 说明:

1. 船首船名标记所需字母, 单元方格尺寸为:  $a \times a = 150 \times 150$ .
2. 尾封板上船名标记所需字母, 单元方格尺寸为:  $a \times a = 100 \times 100$ .
3. 尾封板上港籍名标记所需字母, 单元方格尺寸为:  $a \times a = 80 \times 80$ .
4. 尾封板上IMO NUMBER标记所需字母和数字, 单元方格尺寸为:  $a \times a = 40 \times 40$ .