



SILENCER TYPE EES25/HMC

Silencers of type HM/HMC are designed for applications with critical noise demands, specially in the middle and high frequency ranges. The HMC is specifically designed for applications involving explosion risks. They can be used for 2 and 4 stroke internal combustion engines. The HM is also used as inlet silencer. They are based on the absorption principle. The HMC has an integrated spark arrestor based on the centrifugal principle. The spark arrestors are tested according to PTB directives and are certified by DNV, GL and others. These silencers are frequently used as single

silencers on exhaust systems of 4 or more cylinder engines or combined with L25 type reflection silencers when strong noise reduction is required across the entire frequency range. Many of these silencers or combinations are found in propulsion, bow screw installations, (emergency) diesel generating sets aboard tankers or other equipment in areas with explosion risk. As the performance of these silencers is unique as compared to their price, they are very popular. Therefore, they are usually available from stock.

Mounting

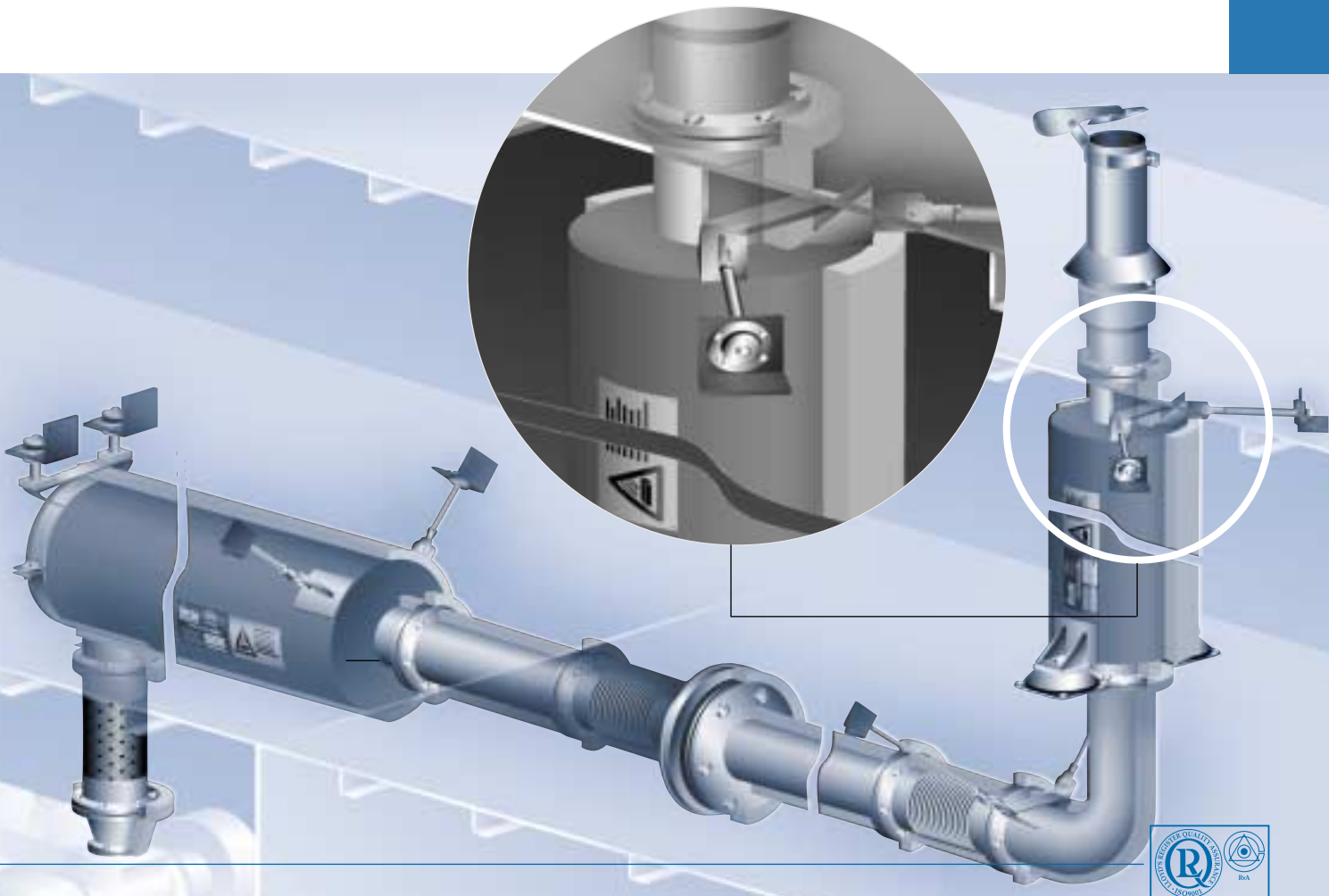
These silencers may be mounted in any position, considering of course the indicated direction of flow. The spark collector of the HMC must be placed underneath the horizontal axis. By use of our supports and mounting brackets easy fitting of the silencers is possible.

Note! Exhaust systems of internal combustion engines are subject to pulsations and other vibration phenomena, therefore it is recommended to mount the entire exhaust system free from vibrations, by applying suitable vibration isolators. As we are exhaust system specialists, we of course can provide a complete program of vibration absorbers and expert advice by our engineers.

Quality and safety

Our manufacturing process from design to delivery is in conformity with the ISO 9001:2000 standard, for which we have been certified. Our silencers are built-in components, therefore no CE marking applies. However in the description of your final product you will have to indicate any potential dangers, for example risk of burns. Therefore we have put a label on your silencer in advance.

Note! Silencers of type HMC are supplied with a spark arrestor. For proper operation, regular cleaning is necessary.

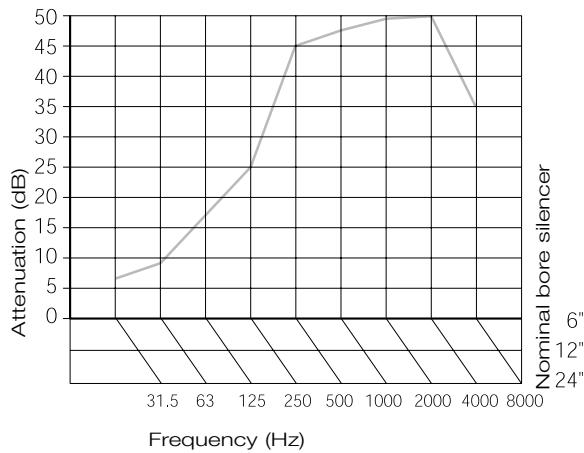


SILENCER

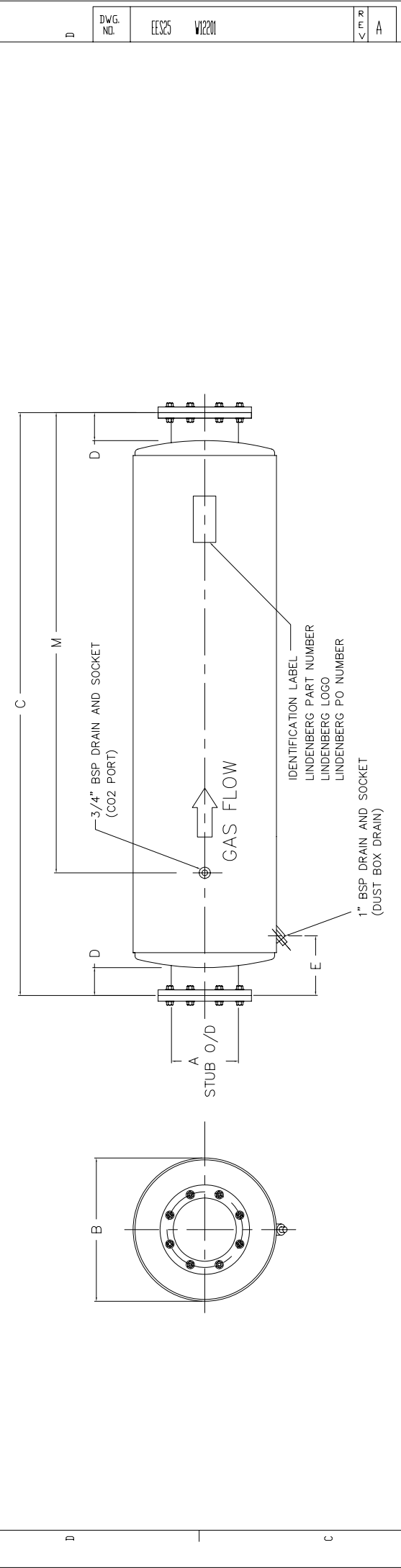
TYPE EES25/HMC

Technical specifications

Attenuation	20-35 dB
Recommended designed gas flow	min. 20 and max. 40 m/s
Pressure drop silencer	see CW-values in the following chart
Maximum allowable gas temperature	600°C: applies to S 235 JR G2. For other temperatures / materials please ask for our advice.
Material	S 235 JR G2; Stainless-steel, Corten or others are optional
Preservation	anticorrosive heat-resistant coating (gray): for other paint systems please ask for our advice.
Insulation	as the body virtually will take the temperature of the medium, in many cases lagging will be necessary. Additional insulation may be needed when noise breakout of the body is a decisive factor for achieving the noise demand.
Flanges	drilled according to DIN 2573 PN6. Other flange models on request
Identification	plate with silencer type and order number
Maintenance	regular cleaning of spark arrestor
Options	single or double inlet, radial in- and/or outlet positions, mounting supports, condensation drain, QAQC planning



REVISION RECORD			
SYM.	CHANGE DESCRIPTION	EWS No	DATE
A	FIRST ISSUE		20-12-2005
			JDK



NOMINAL BORE	DIM A	DIM B	DIM C	DIM D	DIM E	DIM M	APPROX WEIGHT(kg)
100	114.3	259	1500	50	148	--	56
125	139.7	303	1750	50	205	1565*	63
150	168.3	356	1750	75	255	1515*	78
200	219.1	412	2000	75	268	1720*	125
250	273	565	2750	75	350	--	195

○ THESE STANDARD UNITS ARE DNV APPROVED. THEY ARE CONSTRUCTED FROM MILD STEEL AND ARE FINISHED WITH HEAT RESISTANT CONNECTING FLANGES DRILLED TO DIN2573 PN6

* AVAILABLE WITH AND WITHOUT CO2 PORT

THE FOLLOWING CONSTRUCTION OPTIONS ARE AVAILABLE ON REQUEST:

- MATERIALS – MILD STEEL, COR-TEN, ALUMINISED STEEL, STAINLESS STEEL – GRADES 304L, 316L, 409
- FINISHES – SHOT BAST METAL SPRAY TO BS 2569 PART 2 CLASS D (1965) + TWO COATS SILICON SEAL. – HEAT RESISTANT BLACK PAINT.
- ALTERNATIVE FLANGE SPECIFICATIONS
- ALTERNATIVE ENTRY AND EXIT CONFIGURATIONS
- ALTERNATIVE RADIAL DUST BOX POSITION.

○ ALSO AVAILABLE ARE THESE OPTIONAL FEATURES:

- LIFTING LUGS
- HORIZONTAL OR VERTICAL SUPPORT FEET
- INSPECTION DOORS & DRAIN PLUGS
- EXPLOSION RELIEF DOORS
- RAINCAPS, ELBOWS, TAILPIPES
- LAGGING AND CLADDING

○ NOTE : THE TYPE OF CONSTRUCTION MAY VARY IF ANY OF THE ABOVE OPTIONS ARE SPECIFIED.

TOLERANCES UNLESS STATED	NELSON-BURGESS RESERVES PROPRIETARY RIGHTS TO THIS DRAWING AND THE DATA SHOWN THEREON AND IS SUBMITTED IN CONFIDENCE ON THE SAID BASIS. IT IS NOT TO BE REPRODUCED OR TRANSMITTED IN ANY FORM OR BY ANY MEANS, WITHOUT THE EXPRESSED WRITTEN CONSENT OF NELSON-BURGESS.	UNIVERSAL SILENCER
0 - 300 ± 3	CUSTOMERS: LINDBENBERG-ANLAGEN GMBH	NELSON - BURGESS LTD
OVER 300 - 900 ± 6	NAME: EES25	HINKLEY
OVER 900 - 3000 ± 9	TITLE: EES25 STANDARD RANGE	LEICESTERSHIRE, ENGLAND
OVER 3000 - 9000 ± 12	DO NOT SCALE DRAWING. ALL DIMENSIONS ARE IN MILLIMETRES	
OVER 9000 - ± 15	SCALE: N.T.S.	
ANGULAR TOL ± .2°	THIRD ANGLE PROJECTION	
DESIGNED: JDK	DATE: 20-12-2005	DESIGN CONTROL: HINKLEY
DRAWN: JDK	DATE: 20-12-2005	DWG. NO: EES25
CHECKED: JDK	DATE: 20-12-2005	REV: A